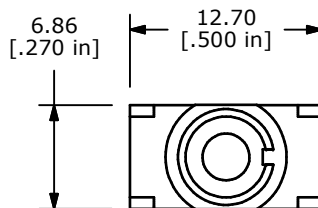
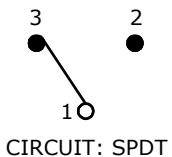
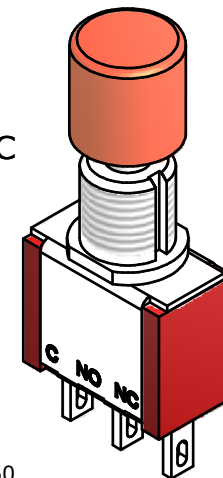


SWITCH FUNCTION	
POS. 1	POS. 2
ON	(ON)
1-3	1-2

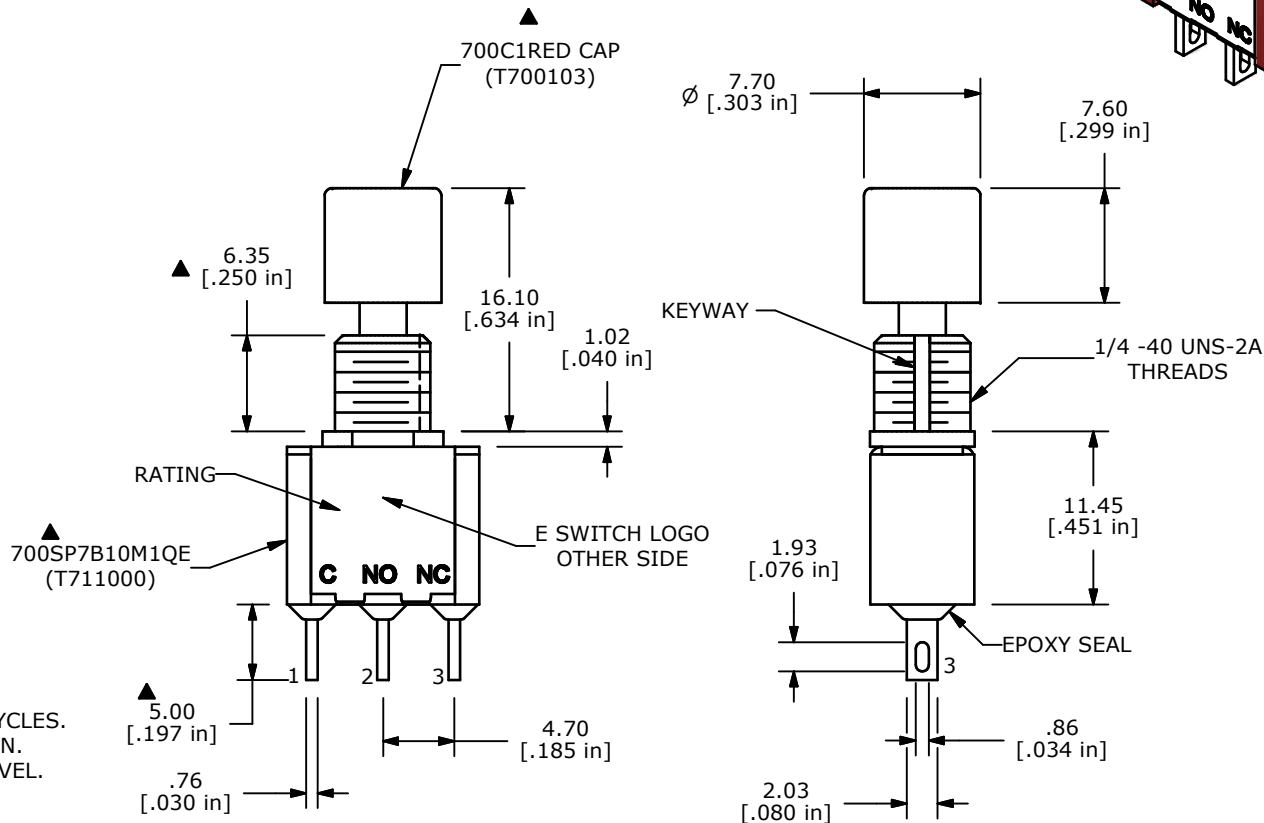
(ON)=MOMENTARY



ISOMETRIC



- NOTE:
1. ALL DIMENSIONS IN MM [INCH]
  2. GENERAL TOLERANCE: X.X=±0.4  
X.XX=±0.25
  3. TERMINAL NUMBERS FOR REF ONLY
  - ▲4. CONTACT MATERIAL: SILVER
  5. RATING: 1 AMP @ 250 VAC  
3 AMP @ 120 VAC or 28VDC
  6. MECHANICAL LIFE: 50,000 MAKE-AND-BREAK CYCLES.
  7. INSULATION RESISTANCE: 1,000 MEGA-OHM MIN.
  8. DIELECTRIC STRENGTH: 1,000 V RMS @ SEA LEVEL.
  9. OPERATING TEMP.: -30°C to 85°C
  - 10.▲DENOTES CRITICAL PARAMETER.
  11. 2002/95/EC (ROHS) COMPLIANT.
  - ▲12. PACKAGE: TRAY/540 PCS PER TRAY



A	18429	RELEASED FOR PRODUCTION	3/12/09	BLR
REV	PCR NO	DESCRIPTION	DATE	BY

TITLE 700SP7B10M1QEC1RED				
SCALE	DATE	DR	DWG	REV
2:1	3/12/2009	BLR	XT0149P	A

THE INFORMATION CONTAINED IN THIS DOCUMENT IS PROPRIETARY TO E-SWITCH AND IS NOT TO BE COPIED OR TRANSFERRED